

Panel IV

Mining and Mine Maps on the Web

Nick Fedorko

West Virginia Geological & Economic Survey
Morgantown, West Virginia





- ◆ WV Office of Miners' Health, Safety, and Training
304-558-1425
www.wvminesafety.org



- ◆ WV Geological and Economic Survey
800-984-3656 or 304-594-2331
www.wvgs.wvnet.edu



West Virginia Office of Miners' Health Safety and Training

West Virginia Mine Map Archives

The Coal Industry of West Virginia is nearly 150 years old. It is estimated that over those years, thousands of mines were abandoned in West Virginia. In many cases very little information was compiled regarding these mines. As early as 1883 Mine Maps were required to be "furnished" to the inspector, however there was no law providing for the maps to be maintained. When a mine was abandoned, it was forgotten. No one considered the future problems that the abandoned mines could create.



(Sample mine map of the Layland Mines in 1915)

The first real indication of abandoned mines presenting a problem was the Hominy Falls disaster of May 6, 1968.



(Photo of Hominy Falls Recovery Operations.)

Four miners of the Gauley Coal and Coke Co., No. 8 mine died as a result of a mining crew cutting into unknown, adjacent, abandoned mine workings filled with water. The resulting inundation, drowned the four miners and trapped many others. Immediately following this disaster laws were passed establishing the "Mine Map Archives". Both the Federal Government and the West Virginia Legislature passed laws regulating the preservation of mine maps. In West Virginia, this law (22A-2-1) requires all mining operators to submit to the West Virginia Office of Miners' Health Safety and Training a final, certified map of their operation. Further it requires the maintenance of maps in a fire-proof vault and required the establishment of an indexing and microfilming system.



The West Virginia Geological and Economic Survey



Joe Manchin III, Governor
Tom Bulla, Secretary, Department of Commerce
Carl J. Smith, Director and State Geologist

- *Geologic Information*
- *Energy Resources*
- *Industrial Minerals*
- *Geologic Hazards*

- *Ground Water*
- *Topographic and Geologic Maps*
- *Earth Science*
- *and Much, Much More!*

Address: 1 Mont Chateau Road
Morgantown, WV 26508-8079
Phone: 1-800-WVGEOLogy
(1-800-984-3656)
or (304) 594-2331
Fax: (304) 594-2575
E-mail: info@geosrv.wvnet.edu

Please Note Our New Mailing Address Above!

[Search This Site](#)

[Scanned Images of West Virginia Mine Maps Available Online](#)

[WVGES Releases Publication of Oil and Gas Well Data](#)

[WVGES Information and History](#) | [What's New?](#) | [Program Descriptions](#) | [F.A.Q.](#) | [Job Openings](#) | [Contact the Webmaster](#) | [Privacy Statement](#)

Products and Services

- [Data](#)
- [Earth Science Information Center](#)
- [Geoscience Education](#)
- [Interactive Coal Bed GIS](#)
- [Interactive Topographic Map Index](#)
- [Maps and Map Files](#)
- [Mine Map Archives](#)
- [PTTC Appalachian Region Oil and Gas Data](#)
- [Publications](#)

Special Features

- [West Virginia Geology](#)
- [Mini-Museum](#)
- [Homeowner's Guide to Geologic Hazards](#)
- [Mountaintop Removal Mining](#)
- [Trace Elements in West Virginia Coals](#)
- [STATEMAP Geologic Mapping](#)
- [Geostatistical Case Studies and Datasets](#)
- [Visiting Geologists at State Parks, 2005 Schedule Available*](#)
- [Have You Seen This Fossil?](#)

Other Resources

- [Geological Links](#)
- [West Virginia Links](#)
- [Software Links](#)



Scanned Images of West Virginia Mine Maps Available Online

Scanned images (TIF format) of West Virginia mine maps are now available online. If you know the 6-digit number of the document you need, proceed to the download site at <ftp://ftp.wvgs.wvnet.edu/pub/minemaps/>. Click here to [view a sample image](#) (547 K).

File names: Each image file name consists of an eight-digit number with the .tif file extension. The first six digits are the document number. Some mines were photographed in multiple images, called scenes. Scene numbers are the last two trailing numbers of the file name. Make sure you download each scene. The images are organized into folders named by the first 3 digits of the document number.

How to get help: If you don't know the mine map document number you need, you can download a Microsoft® Excel format index to the documents from <http://www.wvminesafety.org/minemapcnty.zip>. Or you can also visit the [Interactive Coal Bed GIS site](#) to obtain document numbers for some parts of the state. Help is also available from the West Virginia Geological and Economic Survey at 1-800-984-3656 or the West Virginia Office of Miners' Health, Safety, and Training at 304-558-1425.

Download mine maps at <ftp://ftp.wvgs.wvnet.edu/pub/minemaps/>

This service is made possible by cooperative efforts of the West Virginia Office of Miners' Health, Safety, and Training and the West Virginia Geological and Economic Survey.

[WVGES Welcome Page
\(Main Menu\)](#)

Page last revised: February 24, 2005

Please send questions, comments, and/or suggestions to [webmaster](#).

Page created and maintained by:

West Virginia Geological and Economic Survey

Address: Mont Chateau Research Center

1 Mont Chateau Road

Morgantown, WV 26508-8079

Telephone: 1-800-WV-GEOLogy (1-800-984-3656) or 304-594-2331

Other Places

- pub
- My Documents
- Shared Documents
- My Network Places

Details

- 300-304
- 305-306
- 307-309
- 310-314
- 315-319
- 320-323
- 324
- 325-326
- 327
- 328
- 329
- 330-331
- 332
- 333-334
- 335
- 336
- 337
- 338
- 339
- 340
- 341
- 342-349
- 350-354
- 355-358
- 359-364
- 365
- 366
- 367
- 368
- 369
- 370
- 371
- 372
- 373
- 374-375
- 376
- 377
- 378
- 379-380
- 381
- 382
- 383
- 384-385

Coal Bed Mapping Project

- ◆ Placing the underground mine maps in a geological framework
 - Structural contours and outcrop
 - Depth of overburden
 - Bed and parting thickness
 - Also compiling surface, auger, and highwall mined areas
 - Bed discontinuities
 - Other supporting maps



Interactive Coal Maps

WVGES Welcome

CBMP Welcome

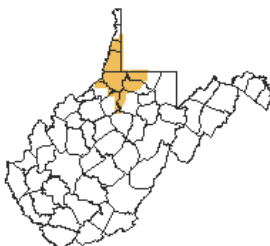
Coverage Explanations

Select Fm./Gp. from Menu

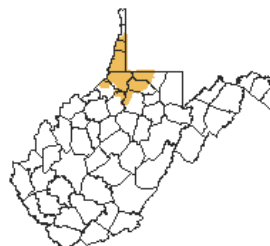
Then Press Go

- Top of Pennsylvanian
- Windy Gap
- Gilmore
- Nineveh A
- Nineveh
- Hostetter
- Fish Creek
- Dunkard
- Jollytown
- Jollytown A
- Hundred
- Washington A
- Washington
- Little Washington
- Waynesburg A
- Waynesburg
- Little Waynesburg
- Uniontown
- Arnoldsburg
- Lower Uniontown
- Sewickley
- Fishpot
- Redstone
- Pittsburgh
- Conemaugh Gp.

Dunkard & Monongahela Groups (Gp.)



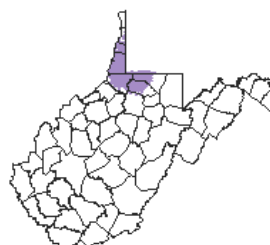
Washington



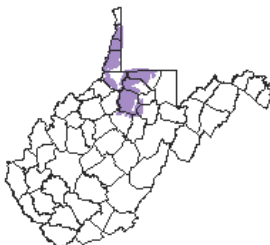
Waynesburg A



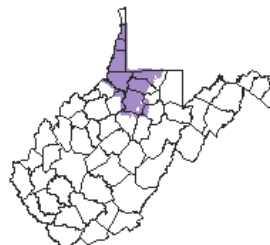
Waynesburg



Sewickley

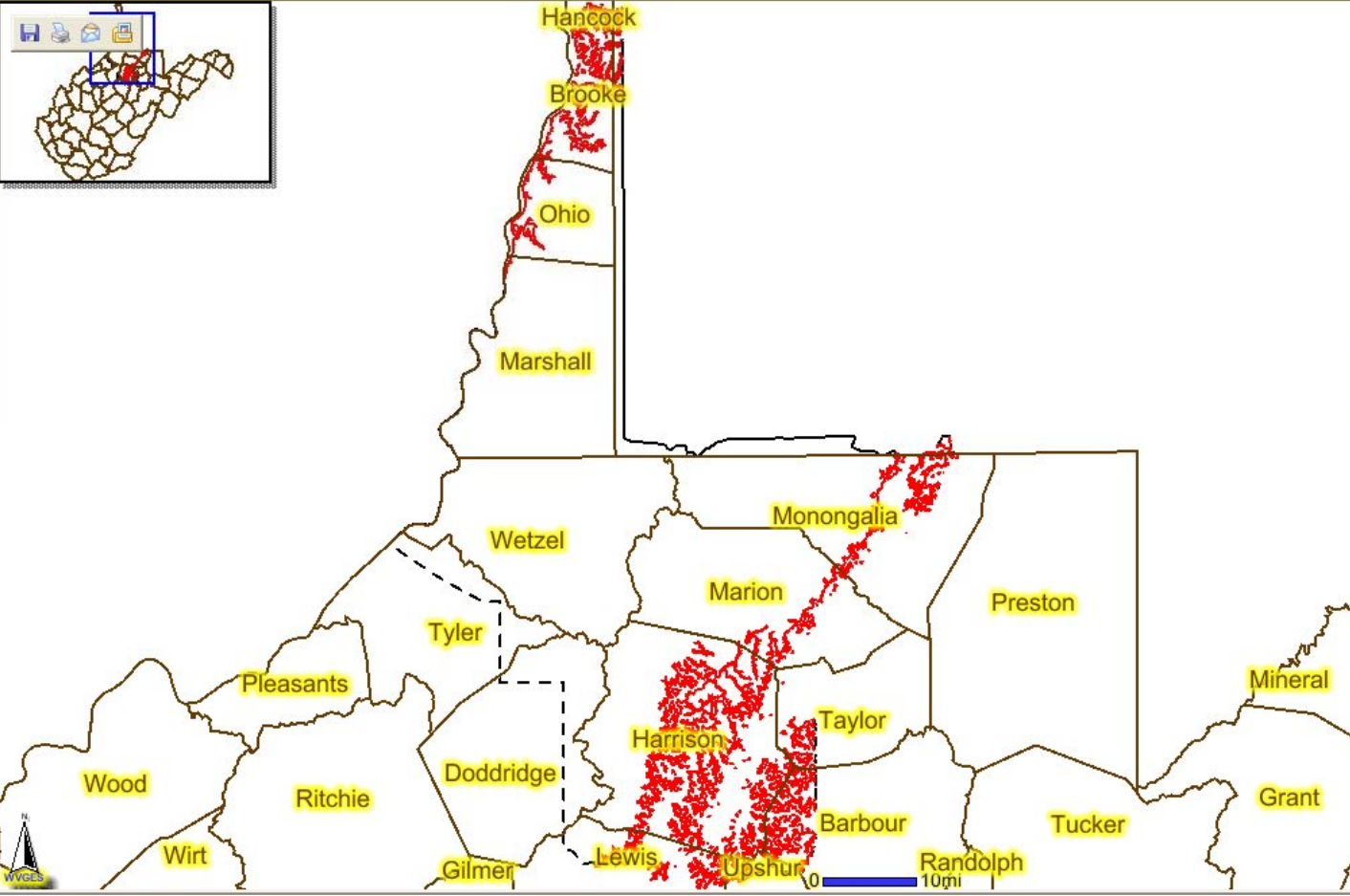
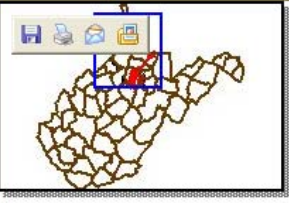


Redstone



Pittsburgh

Page last revised: 04/27/2004 11:32:26



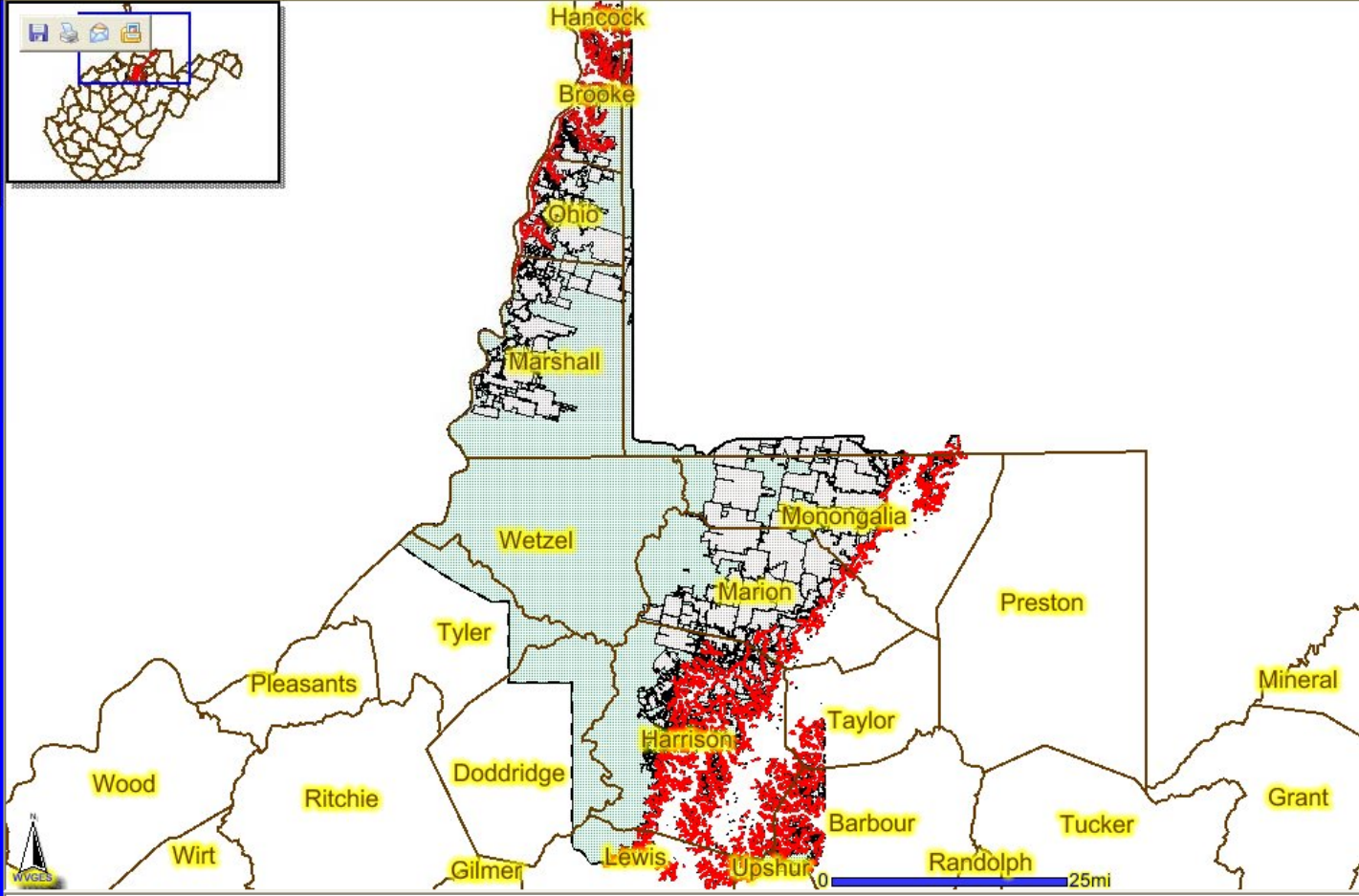
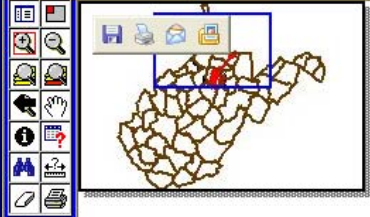
Refresh Map Click Button to Redraw Map

Layers

Visible Active

- WV Counties
- WV Quadrangles
- Elevation Control Points
- Thickness Control Points
- Structural Contours
- Geological Discontinuities
- Mining Extent Unknown
- Aperture Card Labels
- Coal Map Boundaries
- Mined and Remaining Coal
- Net Coal Thickness
- Percent Partings
- Total Bed Thickness N. Panhandle
- Topographic Map Mosaic
- Mon., Marion, Harris. Topographic Map Mosaic


Pittsburgh Coal
[WVGES Home Page](#)
[CBMP Home Page](#)
[Return to Coal Formation](#)
[Coverage Explanations](#)
[Interactive Map Help](#)



Refresh Map Click Button to Redraw Map

- Layers**
- Visible Active
- WV Counties
 - WV Quadrangles
 - Elevation Control Points
 - Thickness Control Points
 - Structural Contours
 - Geological Discontinuities
 - Mining Extent Unknown
 - Aperture Card Labels
 - Coal Map Boundaries
 - Mined and Remaining Coal
 - Net Coal Thickness
 - Percent Partings
 - Total Bed Thickness N. Panhandle
 - Topographic Map Mosaic
 - Mon., Marion, Harris. Topographic Map Mosaic

Mined and Remaining Coal is now the Active Layer



Pittsburgh Coal

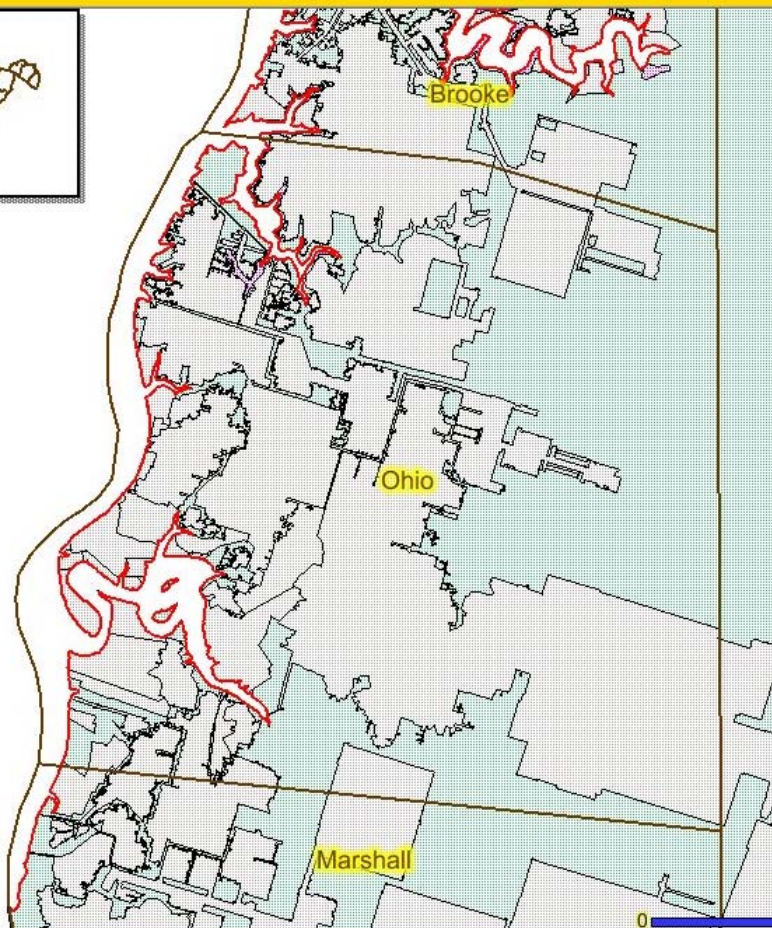
WVGS Home Page

CBMP Home Page

Return to Coal Formation

Coverage Explanations

Interactive Map Help



Refresh Map Click Button to Redraw Map

Layers

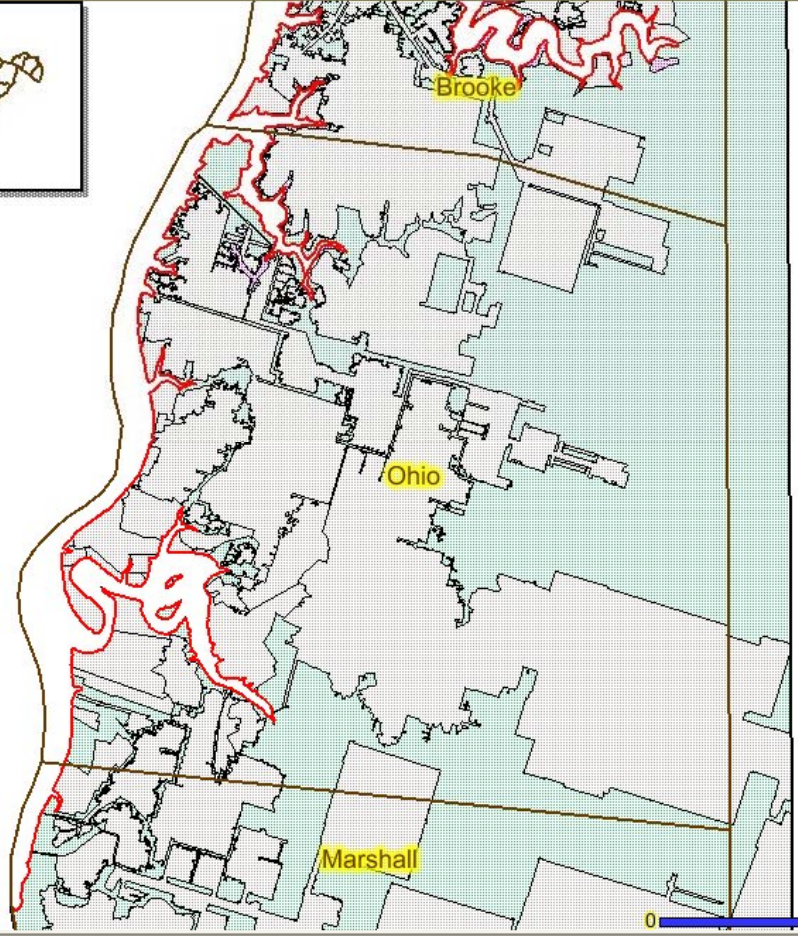
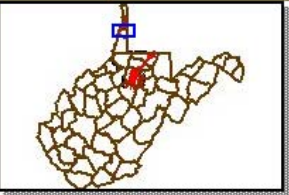
Visible Active

- WV Counties
- WV Quadrangles
- Elevation Control Points
- Thickness Control Points
- Structural Contours
- Geological Discontinuities
- Mining Extent Unknown
- Aperture Card Labels
- Coal Map Boundaries
- Mined and Remaining Coal
- Net Coal Thickness
- Percent Partings
- Total Bed Thickness
- N. Panhandle Topographic Map Mosaic
- Mon., Marion, Harris. Topographic Map Mosaic

Mined and Remaining Coal is now the Active Layer

Pittsburgh Coal

[WVGES Home Page](#)
[CBMP Home Page](#)
[Return to Coal Formation](#)
[Coverage Explanations](#)
[Interactive Map Help](#)

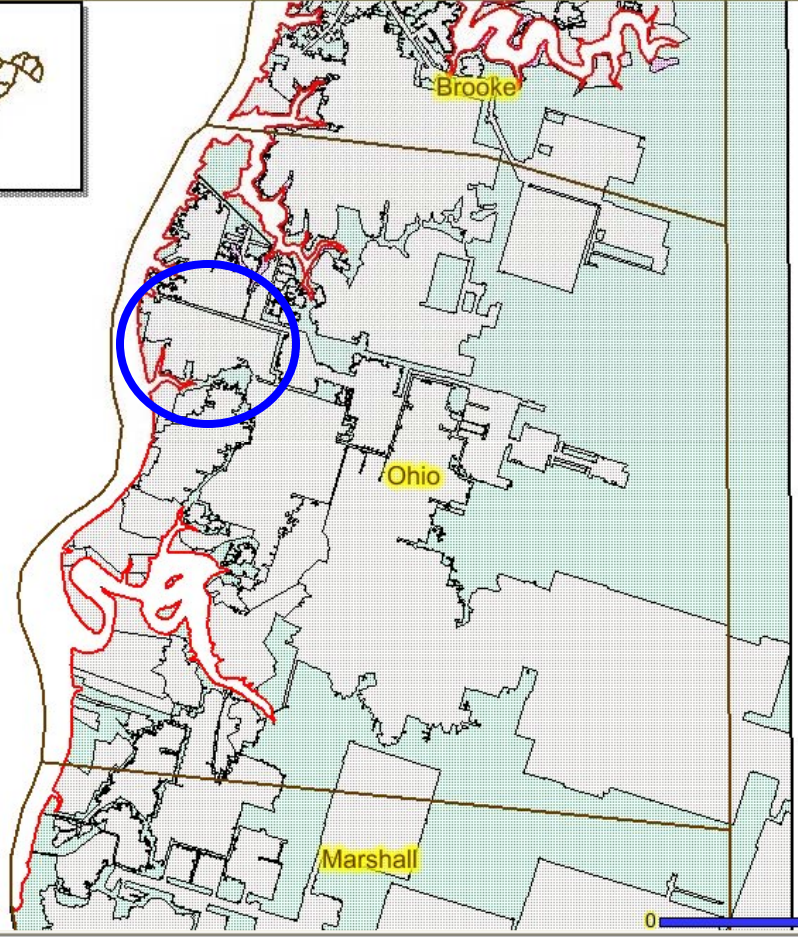
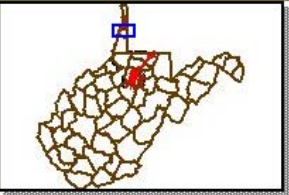


Refresh Map Click Button to Redraw Map

- ### Layers
- Visible Active
- WV Counties
 - WV Quadrangles
 - Elevation Control Points
 - Thickness Control Points
 - Structural Contours
 - Geological Discontinuities
 - Mining Extent Unknown
 - Aperture Card Labels
 - Coal Map Boundaries
 - Mined and Remaining Coal
 - Net Coal Thickness
 - Percent Partings
 - Total Bed Thickness N. Panhandle
 - Topographic Map Mosaic
 - Mon., Marion, Harris. Topographic Map Mosaic


Pittsburgh Coal
WVGES Home Page
CBMP Home Page
Return to Coal Formation
Coverage Explanations
Interactive Map Help

Map navigation icons: Home, Back, Forward, Stop, Refresh, Print, Zoom In, Zoom Out, Full Screen, Layer Control, Help, etc.



Refresh Map Click Button to Redraw Map

- Layers**
- Visible Active
- WV Counties
 - WV Quadrangles
 - Elevation Control Points
 - Thickness Control Points
 - Structural Contours
 - Geological Discontinuities
 - Mining Extent Unknown
 - Aperture Card Labels
 - Coal Map Boundaries
 - Mined and Remaining Coal
 - Net Coal Thickness
 - Percent Partings
 - Total Bed Thickness
 - N. Panhandle Topographic Map Mosaic
 - Mon.,Marion,Harris. Topographic Map Mosaic

Mined and Remaining Coal

Rec	Aperture Card Number	Mine Name	Company Name	Permit Number	Comment	Mine Type	#SHAPE#	#ID#
1	304267A	WHEELING VALLEY COAL CORP	WHEELING VALLEY COAL CO	NDE	NDE	Underground Mined	[polygon]	499

Folder Tasks

- Rename this folder
- Move this folder
- Copy this folder
- Delete this folder

Other Places

- pub
- My Documents
- Shared Documents
- My Network Places

Details

300-304	305-306	307-309	310-314	315-319	320-323	324
325-326	327	328	329	330-331	332	333-334
335	336	337	338	339	340	341
342-349	350-354	355-358	359-364	365	366	367
368	369	370	371	372	373	374-375
376	377	378	379-380	381	382	383
384-385						

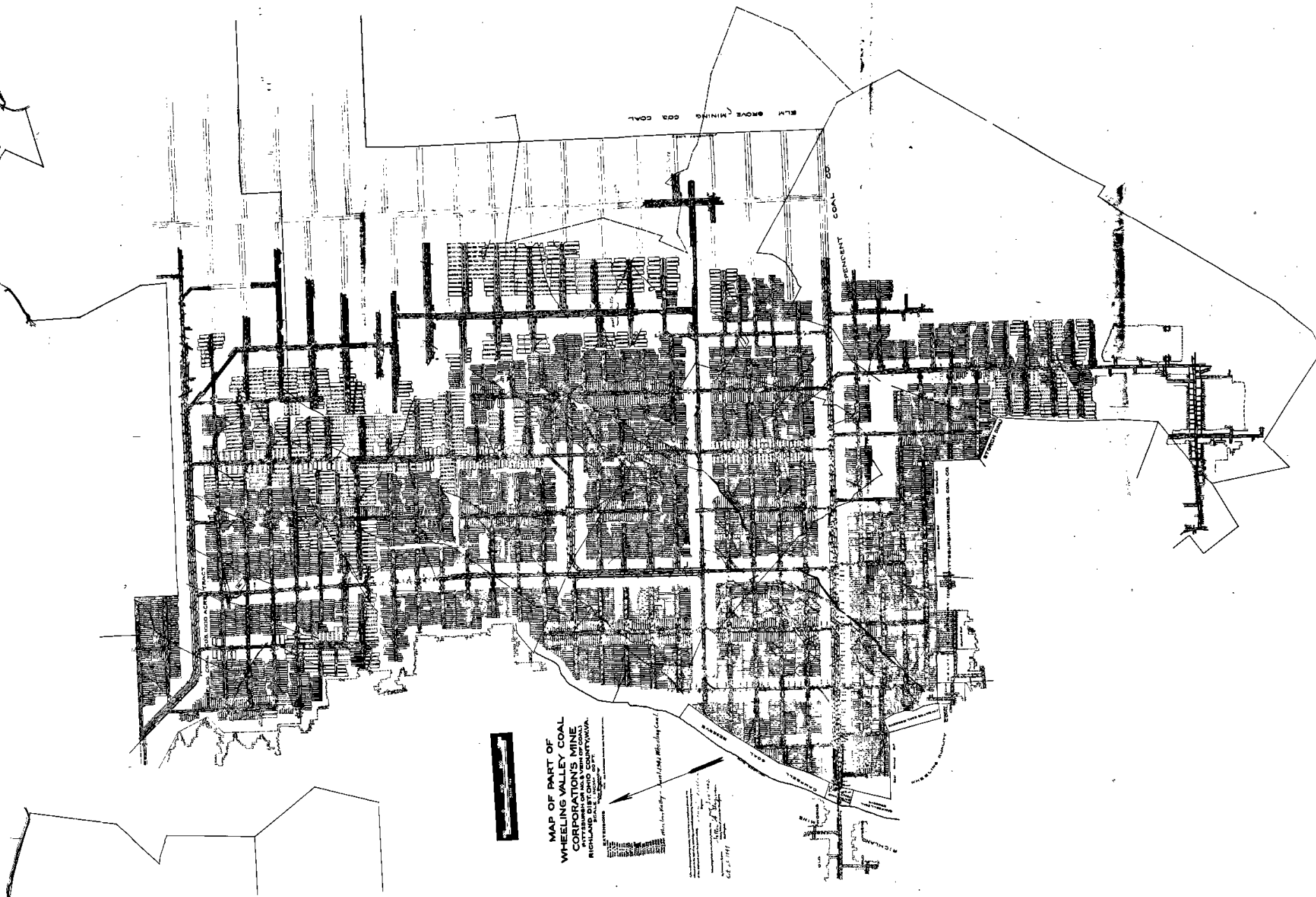
Other Places

- minemaps
- My Documents
- Shared Documents
- My Network Places

Details

Name	Size	Type	Modified
30420401.tif	90.4 KB	Corel PHOTO-PAINT 8...	9/16/2004 12:00 AM
30420701.tif	87.2 KB	Corel PHOTO-PAINT 8...	9/16/2004 12:00 AM
30420901.tif	112 KB	Corel PHOTO-PAINT 8...	9/16/2004 12:00 AM
30421001.tif	102 KB	Corel PHOTO-PAINT 8...	9/16/2004 12:00 AM
30421101.tif	197 KB	Corel PHOTO-PAINT 8...	9/16/2004 12:00 AM
30421201.tif	205 KB	Corel PHOTO-PAINT 8...	9/16/2004 12:00 AM
30421501.tif	110 KB	Corel PHOTO-PAINT 8...	9/16/2004 12:00 AM
30422401.tif	503 KB	Corel PHOTO-PAINT 8...	9/16/2004 12:00 AM
30422402.tif	273 KB	Corel PHOTO-PAINT 8...	9/16/2004 12:00 AM
30422501.tif	256 KB	Corel PHOTO-PAINT 8...	9/16/2004 12:00 AM
30422801.tif	98.2 KB	Corel PHOTO-PAINT 8...	9/16/2004 12:00 AM
30423101.tif	400 KB	Corel PHOTO-PAINT 8...	9/16/2004 12:00 AM
30423801.tif	376 KB	Corel PHOTO-PAINT 8...	9/16/2004 12:00 AM
30423901.tif	168 KB	Corel PHOTO-PAINT 8...	9/16/2004 12:00 AM
30424401.tif	218 KB	Corel PHOTO-PAINT 8...	9/16/2004 12:00 AM
30424601.tif	80.7 KB	Corel PHOTO-PAINT 8...	9/16/2004 12:00 AM
30424901.tif	141 KB	Corel PHOTO-PAINT 8...	9/16/2004 12:00 AM
30425101.tif	122 KB	Corel PHOTO-PAINT 8...	9/16/2004 12:00 AM
30425501.tif	166 KB	Corel PHOTO-PAINT 8...	9/16/2004 12:00 AM
30425701.tif	619 KB	Corel PHOTO-PAINT 8...	9/16/2004 12:00 AM
30426001.tif	44.2 KB	Corel PHOTO-PAINT 8...	9/16/2004 12:00 AM
30426201.tif	145 KB	Corel PHOTO-PAINT 8...	9/16/2004 12:00 AM
30426202.tif	94.1 KB	Corel PHOTO-PAINT 8...	9/16/2004 12:00 AM
30426701.tif	108 KB	Corel PHOTO-PAINT 8...	9/16/2004 12:00 AM
30428301.tif	119 KB	Corel PHOTO-PAINT 8...	9/16/2004 12:00 AM
30428401.tif	202 KB	Corel PHOTO-PAINT 8...	9/16/2004 12:00 AM
30428501.tif	384 KB	Corel PHOTO-PAINT 8...	9/16/2004 12:00 AM
30430201.tif	50.7 KB	Corel PHOTO-PAINT 8...	9/16/2004 12:00 AM
30430202.tif	48.5 KB	Corel PHOTO-PAINT 8...	9/16/2004 12:00 AM
30430601.tif	97.5 KB	Corel PHOTO-PAINT 8...	9/16/2004 12:00 AM
30430602.tif	140 KB	Corel PHOTO-PAINT 8...	9/16/2004 12:00 AM
30431101.tif	118 KB	Corel PHOTO-PAINT 8...	9/16/2004 12:00 AM
30431102.tif	88.6 KB	Corel PHOTO-PAINT 8...	9/16/2004 12:00 AM
30431301.tif	158 KB	Corel PHOTO-PAINT 8...	9/16/2004 12:00 AM
30431302.tif	189 KB	Corel PHOTO-PAINT 8...	9/16/2004 12:00 AM
30431501.tif	563 KB	Corel PHOTO-PAINT 8...	9/16/2004 12:00 AM
30431502.tif	443 KB	Corel PHOTO-PAINT 8...	9/16/2004 12:00 AM
30432101.tif	150 KB	Corel PHOTO-PAINT 8...	9/16/2004 12:00 AM
30432102.tif	228 KB	Corel PHOTO-PAINT 8...	9/16/2004 12:00 AM
30432103.tif	197 KB	Corel PHOTO-PAINT 8...	9/16/2004 12:00 AM
30432201.tif	228 KB	Corel PHOTO-PAINT 8...	9/16/2004 12:00 AM
30432202.tif	193 KB	Corel PHOTO-PAINT 8...	9/16/2004 12:00 AM
30432401.tif	129 KB	Corel PHOTO-PAINT 8...	9/16/2004 12:00 AM
30432402.tif	112 KB	Corel PHOTO-PAINT 8...	9/16/2004 12:00 AM
30432403.tif	197 KB	Corel PHOTO-PAINT 8...	9/16/2004 12:00 AM





MAP OF PART OF
 WHEELING VALLEY COAL
 CORPORATION'S MINE
 RICHLAND DISTRICT, OHIO COUNTY, W. VA.
 SCALE 1" = 100'

This map was prepared by the
 U.S. Geological Survey, Washington, D.C.
 1914

ELM GROVE MINING CO'S COAL
 COAL CO
 PRESENT COAL CO

WHEELING VALLEY COAL CORPORATION'S MINE
 RICHLAND DISTRICT, OHIO COUNTY, W. VA.

Improvements

- ◆ Link CBMP IMS to mine image FTP site
- ◆ Provide an on-line searchable database and link to the image FTP site



***West Virginia Office
of Miners' Health, Safety,
and Training***



***West Virginia Geological
and Economic Survey***